

# OWNERS MANUAL

## VorMax® Plus Series 708AA

### THANK YOU.

Getting the toilet completely clean is one of the nastiest jobs, especially those dirty, hard-to-reach spots under the rim. That's why American Standard® and Lysol® have teamed up to bring you the solution to effortless toilet bowl cleaning.

Introducing the self-cleaning toilet, **VorMax® Plus**.

**The VorMax® Plus toilet** features a self-cleaning system that cleans with every flush. It uses the power of the VorMax® jetted scrub and LYSOL® to keep the bowl clean continuously, flush after flush.

At American Standard we continually work harder to raise the standard of daily living by making it easier, safer and more beautiful.



LYSOL® is used under license to American Standard. © 2017

Product names listed herein are trademarks of AS America, Inc.  
© AS America, Inc. 2017

Image shown may vary from product purchased.



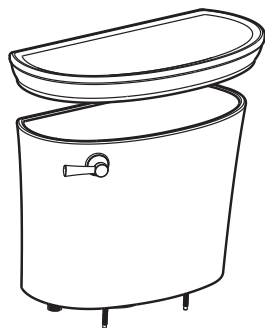
7302253-100 EN Rev. A

*American  
Standard*

## TABLE OF CONTENTS

Inside The Box.....	page 3
Before You Start.....	page 3
Installation Video Information.....	page 3
If Removing An Existing Toilet.....	page 3
Back-to-Back Installation.....	page 4
Installation Instructions.....	page 4
How It Works.....	page 9
VorMax Plus FreshInfuser™ .....	page 9
Troubleshooting Guide for VorMax Plus FreshInfuser™ .....	page 10
Troubleshooting Guide for VorMax® Plus Toilet.....	page 10
Care and Cleaning.....	page 10
Warranty.....	page 11

## Inside The Box:



Attachment Handle



Nuts (3)



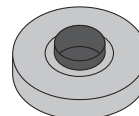
Bolt Caps (2)



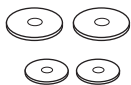
Bowl-To-Floor Knobs (2)



T-Bolts with Retainer (2)



Wax Ring



Washers (4)



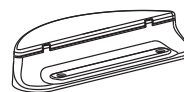
Long Bolts (2)



Nuts (2)



Rubber Grommets (2)



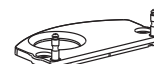
Base Plate Housing



Toilet Seat

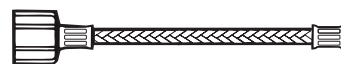


VorMax Plus  
FreshInfuser™  
2 Packs



Base Plate

### SOLD SEPARATELY



Water Supply Line

## Before You Start:

Before installing your toilet, please see your product spec page to verify the dimensions and water supply connections. Visit our website where you can search by Model number for the product spec page at:

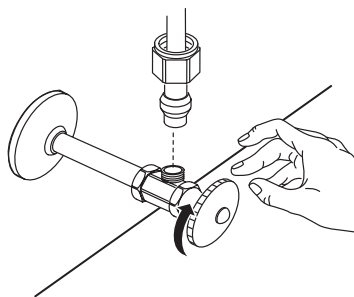
<http://www.americanstandard-us.com/>

For Assistance Call Customer Care at: (800) 442-1902

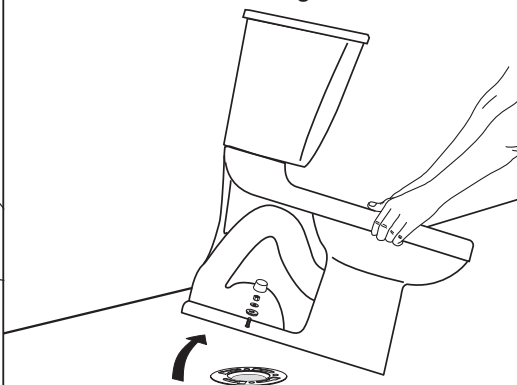
Installation video can be found at: <http://www.americanstandard-us.com/vormaxtoilet>

## If Removing An Existing Toilet

Turn off water supply.



Flush to remove water from tank;  
sponge remaining water from  
bowl before removing toilet.



Clean Flange



**⚠ Caution:** If leaving floor flange open for more than 1-2 hours, cover flange to prevent escaping sewer gasses.

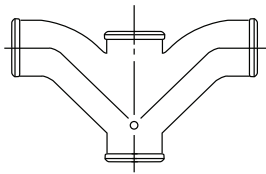


**CAUTION:** IF A VORMAX PLUS FRESHINFUSER IS NOT SECURELY INSERTED INTO THE SPUD OPENING, **DO NOT FLUSH THE TOILET** AS THIS MAY RESULT IN WATER LEAKING FROM THE TOILET. **TOILET MUST HAVE A VORMAX PLUS FRESHINFUSER INSERTED IN THE SPUD OPENING AT ALL TIMES WHEN FLUSHING THE TOILET.**

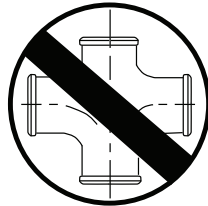
For further assistance please call Customer Care at: (800) 442-1902

## BACK-TO-BACK INSTALLATION

### Installation Instructions:

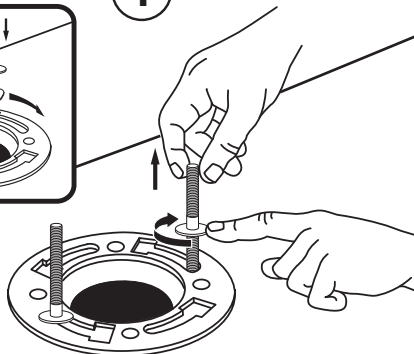
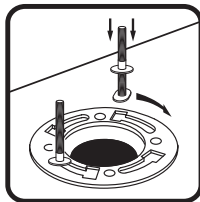


Recommended fitting type for back-to-back installations.

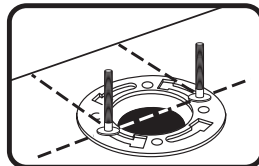


Depending upon your plumbing and venting conditions, the flow from this toilet in a back-to-back installation may create a vacuum on the system and draw water from the opposing bowl. The National Standards Plumbing Code prohibits the use of a cross fitting for drainage as throw over is possible. The code does approve a directional "Y" style fitting with proper venting to direct the water downward and away from the other toilet.

1

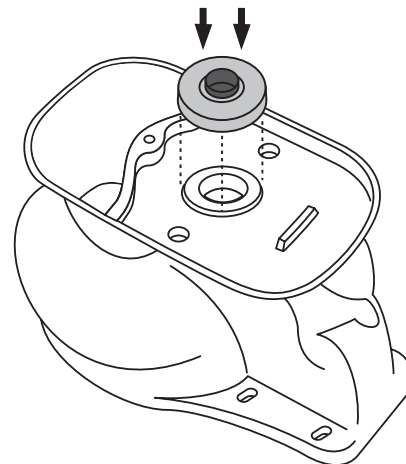


Install T-Bolts onto the flange and screw the retaining nuts to hold into place.



2

Flip the bowl upside down and press the wax ring down firmly.



3

Align the bowl and bolt holes to set into place. Apply weight evenly.

Do not move after placement as water tight seal may break.

**TIP:** Place a piece of masking tape on the floor next to the bolts on both sides to help with alignment.

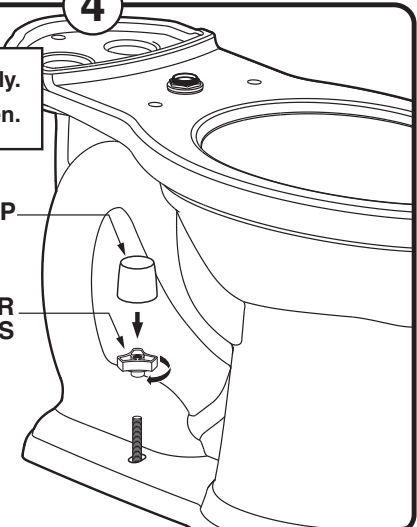


4

**⚠ Hand tighten only.  
Do not overtighten.**

BOLT CAP

BOWL-TO-FLOOR KNOBS



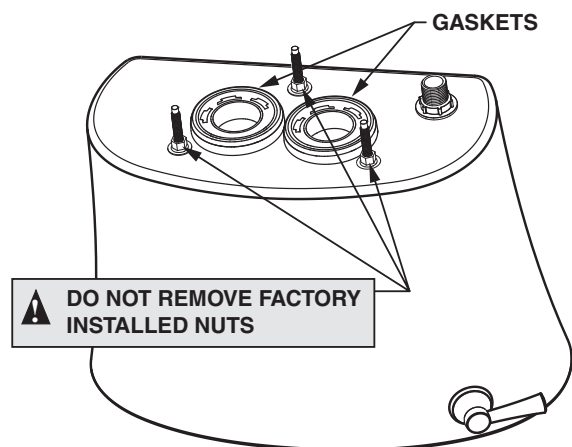


**CAUTION:** IF A VORMAX PLUS FRESHINFUSER IS NOT SECURELY INSERTED INTO THE SPUD OPENING, **DO NOT FLUSH THE TOILET** AS THIS MAY RESULT IN WATER LEAKING FROM THE TOILET. **TOILET MUST HAVE A VORMAX PLUS FRESHINFUSER INSERTED IN THE SPUD OPENING AT ALL TIMES WHEN FLUSHING THE TOILET.**

For further assistance please call Customer Care at: (800) 442-1902

5

Confirm gaskets are fully seated on tank.

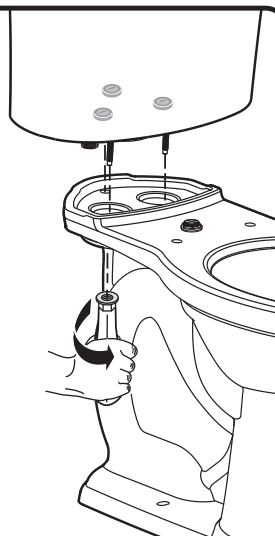


6

Using the provided handle, tighten the nuts alternately until the tank contacts the front and back of the bowl achieving china-to-china contact.

**NOTES:**

- a) To ease installation, push down on the top of the tank while tightening the nuts.
- b) Tighten all three nuts adequately.



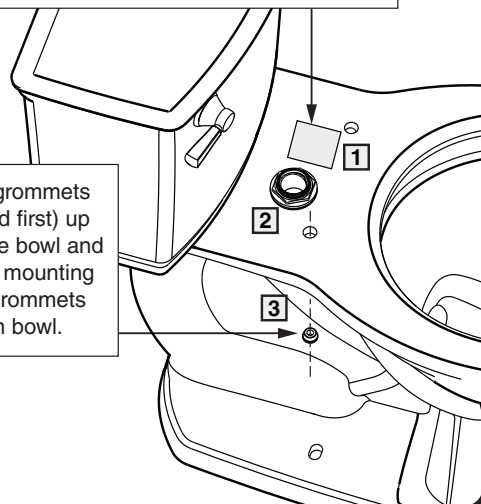
**IMPORTANT:** Please do not connect the water supply line until the last step

7

**Assembly of Housing Base Plate**

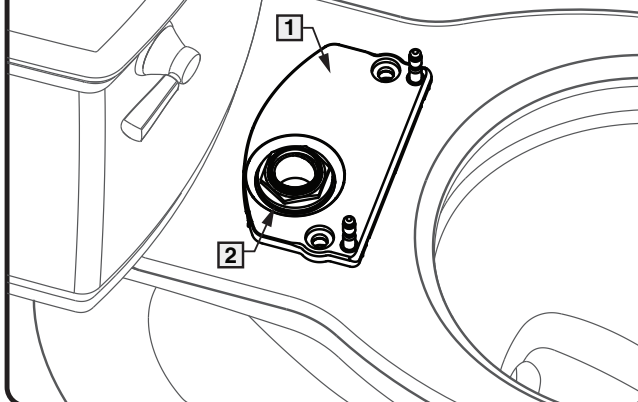
Read carefully then remove CAUTION sticker (1) next to spud (2) from rear of bowl.

Insert rubber grommets (3) (narrow end first) up underneath the bowl and into each seat mounting hole. Ensure grommets stay in place in bowl.



8

Check that rubber gasket is firmly attached to the underside of the base plate (1) and place plate over Spud (2) and rear of bowl while aligning the two mounting holes through the bowl.

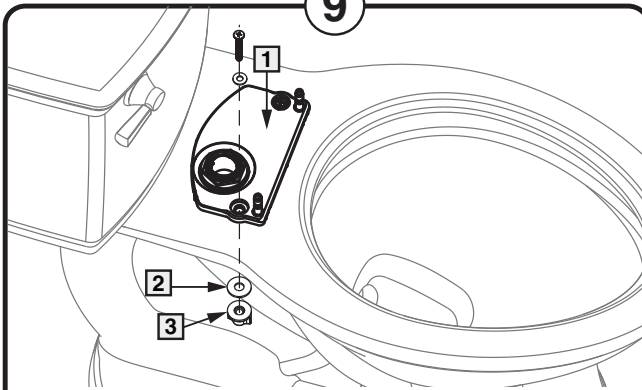




**CAUTION: IF A VORMAX PLUS FRESHINFUSER IS NOT SECURELY INSERTED INTO THE SPUD OPENING, DO NOT FLUSH THE TOILET AS THIS MAY RESULT IN WATER LEAKING FROM THE TOILET. TOILET MUST HAVE A VORMAX PLUS FRESHINFUSER INSERTED IN THE SPUD OPENING AT ALL TIMES WHEN FLUSHING THE TOILET.**

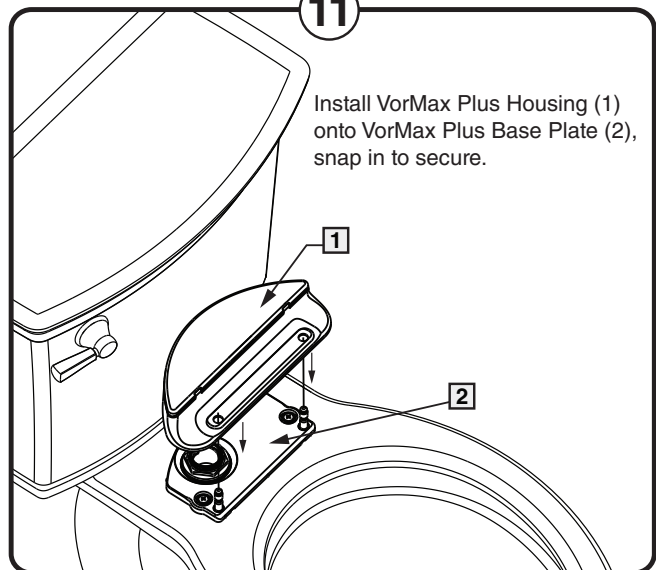
For further assistance please call Customer Care at: (800) 442-1902

9



From above, install mounting screws and washers (1) through each hole, then place rubber washer (2) and plastic nut (3) from underneath onto each bolt. Snug down but do not fully tighten.

11

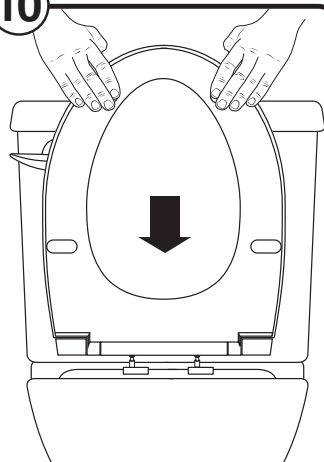


Install VorMax Plus Housing (1) onto VorMax Plus Base Plate (2), snap in to secure.

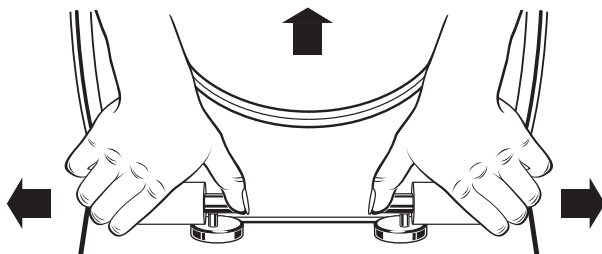
10

### Seat Alignment

Place seat onto the protruding Base Plate Posts and press in to “click” into place, close seat and cover and align seat with bowl. Once aligned, further tighten seat nuts under bowl to securely hold seat in position.



Remove seat by pressing both inside buttons to release seat and cover:



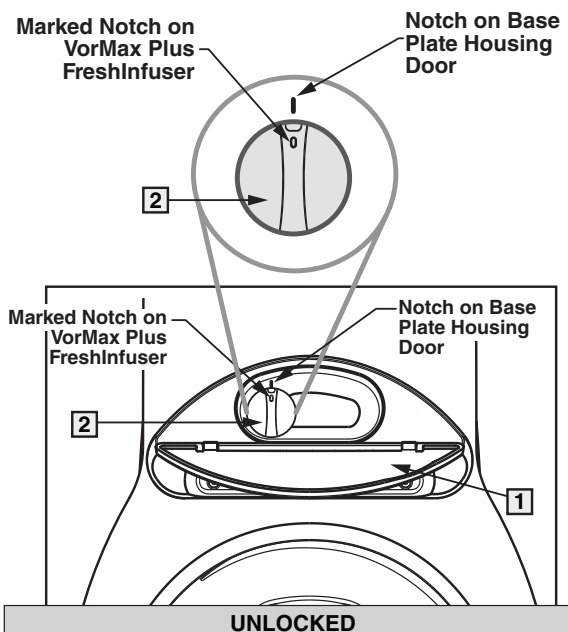
Open the seat and cover. Push both inside buttons to release seat and cover. Pull the seat and cover upwards to take it off the hinges.

12

Open Base Plate Housing Door (1). Observe the marked notch on the VorMax Plus FreshInfuser (2). Observe the same marked notch located on the Base Plate Housing.

Before installing, line up the marked notches on the Base Plate Housing and the VorMax Plus FreshInfuser.

Insert the VorMax Plus FreshInfuser into the spud opening aligning the marked notch on the VorMax Plus FreshInfuser and the Base Plate Housing.





**CAUTION:** IF A VORMAX PLUS FRESHINFUSER IS NOT SECURELY INSERTED INTO THE SPUD OPENING, **DO NOT FLUSH THE TOILET** AS THIS MAY RESULT IN WATER LEAKING FROM THE TOILET. **TOILET MUST HAVE A VORMAX PLUS FRESHINFUSER INSERTED IN THE SPUD OPENING AT ALL TIMES WHEN FLUSHING THE TOILET.**  
For further assistance please call Customer Care at: (800) 442-1902

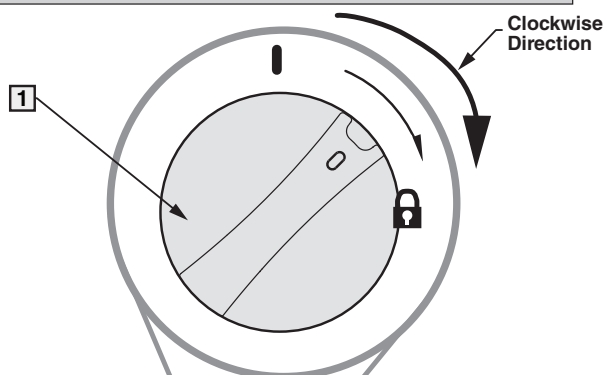
13

Turn VorMax Plus FreshInfuser (1) in a clockwise direction (following arrow direction) until it stops at the "Lock" symbol approximately 1/4 turn.

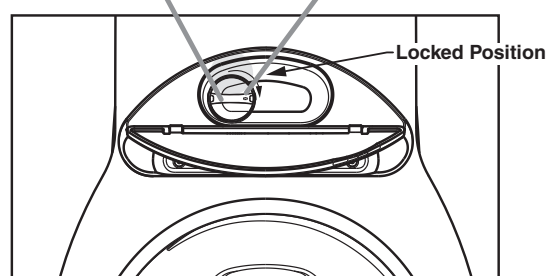
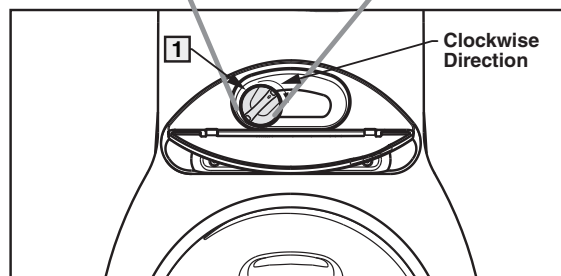
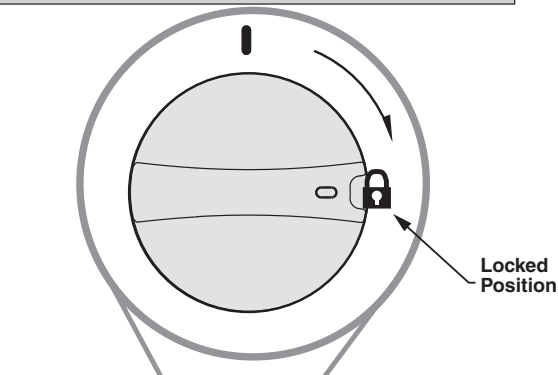


**WARNING:** Ensure that the VorMax Plus FreshInfuser is correctly aligned when inserted. If it is not correctly aligned water could leak from the opening.

TURNING TO LOCK



LOCKED



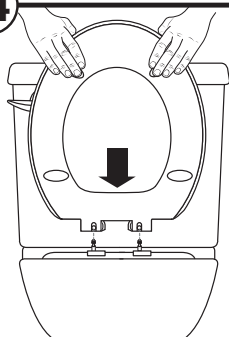
**CAUTION:** IF A VORMAX PLUS FRESHINFUSER IS NOT SECURELY INSERTED INTO THE SPUD OPENING, **DO NOT FLUSH THE TOILET** AS THIS MAY RESULT IN WATER LEAKING FROM THE SPUD OPENING.



**TOILET MUST HAVE A VORMAX PLUS FRESHINFUSER INSERTED IN THE SPUD OPENING AT ALL TIMES WHEN FLUSHING THE TOILET.**

14

Place seat back onto the back plate posts and press to "click" into place.



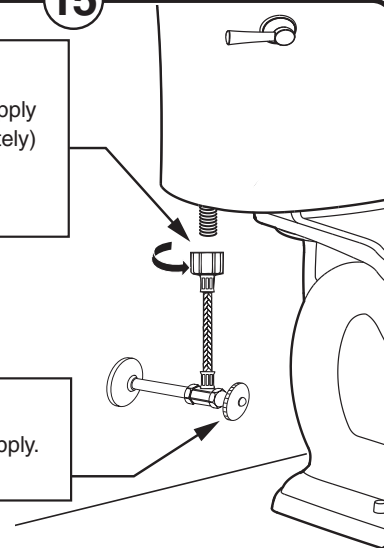
15

A

Connect water supply line. (Sold separately)  
Hand tighten nut.

B

Turn on water supply.



**WARNING:** Overtightening of water supply line nuts could result in breakage and potential flooding. If the connection leaks after hand tightening, replace the supply line. If the connection continues to leak with the new supply line, replace the fill valve. Do not use any type of sealant on the water supply connection. Use of plumber's putty, pipe dope, or any other type of sealant will void the warranty.

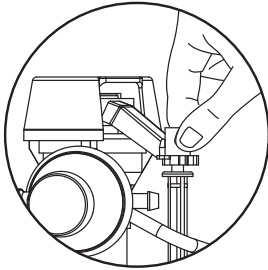




**CAUTION:** IF A VORMAX PLUS FRESHINFUSER IS NOT SECURELY INSERTED INTO THE SPUD OPENING, **DO NOT FLUSH THE TOILET** AS THIS MAY RESULT IN WATER LEAKING FROM THE TOILET. **TOILET MUST HAVE A VORMAX PLUS FRESHINFUSER INSERTED IN THE SPUD OPENING AT ALL TIMES WHEN FLUSHING THE TOILET.**

For further assistance please call Customer Care at: (800) 442-1902

16



Water Level Adjustment Knob

Trip Lever Rod

Overflow Tube

Approximate Water Level

Float Cup

Adjustable Screw

Fill Valve  
Or Water  
Control

Water Supply Line

**A** Adjust water level to level indicated on tank by turning water level adjustment knob to move float cup up or down.

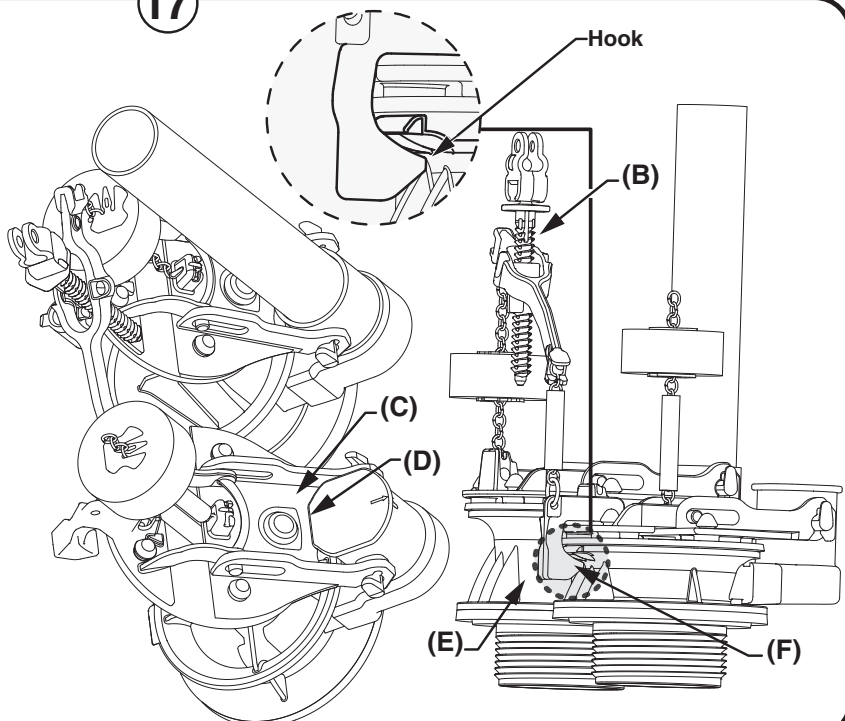
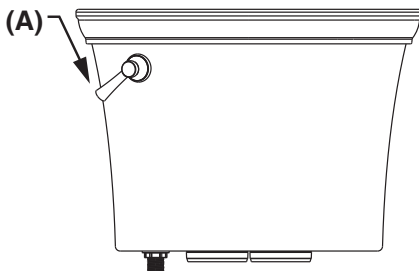
**B** Prime the system by flushing the product 5 times before use to achieve optimal performance.

**C PROPER FLUSHING METHOD:** Be sure to fully depress the trip lever on each flush. Do not hold the trip lever down for extended periods of time as this could allow air to enter the system which will slightly degrade performance for a few flushes.

17

#### VERIFY ADJUSTABLE SCREW SETUP

1. Depress trip lever handle all the way **(A)**.
2. Adjust screw on the teeter bar **(B)** so rear frame **(C)** touches the frame stop **(D)**.
3. Return trip lever handle **(A)** to rest position.
4. Make sure hook **(E)** is fully engaged under tab on valve body **(F)**, if not, slightly adjust screw to make sure hook is engaged.





*American  
Standard*



## HOW IT WORKS

VorMax® Plus technology infuses Lysol® cleaner into the water with each flush, freshening the bowl day after day. Its powerful VorMax® jetted scrub allows Lysol® cleaner to scrub the entire bowl, including under the CleanCurve™ Rim. The VorMax Plus FreshInfuser™ is hidden in a compartment and easy to access. Unlike competitive products, there's nothing unsightly hanging inside of the bowl. Each VorMax Plus FreshInfuser™ lasts 30 days and exudes an ocean fresh scent. Daily use of the VorMax® Plus toilet offers continuous freshness, flush after flush.

## VorMax Plus FreshInfuser™



- Two VorMax Plus FreshInfuser™ packs included with the purchase of your toilet
- Each VorMax Plus FreshInfuser™ pack freshens up to \*30 days (about 360 flushes).
- Ocean Fresh Scent
- VorMax Plus FreshInfuser™ packs available for purchase online at:  
**<https://www.americanstandard.com/VorMaxPlus>**  
or at participating supply houses and retailers.

\*Based on a usage of 12 flushes per day.

## Troubleshooting Guide for VorMax Plus FreshInfuser™

Problem	Possible Cause	Corrective Action
Water leaks around VorMax Plus FreshInfuser	a. VorMax Plus FreshInfuser not inserted into Spud correctly b. Rubber gasket around VorMax Plus FreshInfuser is damaged or missing c. No FreshInfuser inserted in spud	a. Remove VorMax Plus FreshInfuser and reinsert. Reference steps 12 and 13 b. Replace VorMax Plus FreshInfuser c. Insert VorMax Plus FreshInfuser
Bowl not as clean as it should be	a. VorMax Plus FreshInfuser cleaner pack is empty	a. Replace VorMax Plus FreshInfuser

## Troubleshooting Guide for VorMax® Plus Toilet

See Step 16-17 For Diagram

Problem	Possible Cause	Corrective Action
Does not flush	a. Water supply valve closed. b. Supply line blocked. c. Flush valve chain too loose or disconnected. d. Sand or debris lodged in water control.	a. Open valve and allow water to fill tank. b. Shut off water supply, disconnect supply line and inspect all gaskets and washers. Reassemble. c. Readjust chain length as required. d. Shut off water supply. Remove cap and clean as per Fluidmaster maintenance instructions at: <a href="http://www.americanstandard-us.com/enews/fluidmasterguide.pdf">www.americanstandard-us.com/enews/fluidmasterguide.pdf</a>
Poor or sluggish flush	a. Bowl water level too low. b. Supply valve partly closed. c. Partially clogged trapway and/or drain pipe and/or vent. d. Supply pressure too low. e. Tank not installed tightly on bowl. f. Product has air stuck in waterways. g. Incorrect tank water level h. Trip lever not opening jet flapper to stop i. Air leak j. Trip lever not returning to original position k. Loss of prime due to depressing on the trip lever too long	a. Check that refill tube is connected to water control and inserted into overflow tube without being kinked or damaged. b. Open supply valve fully. Be sure that proper supply tube size is used. c. Remove obstruction. Consult a plumber if necessary. d. Normal supply pressure must be at least 20 psi. e. Tighten bolts as shown in Step 6 to make sure the tank is touching the piers of the bowl in the front and back of the product. f. Re-prime bowl by flushing 5 times in a row allowing the tank to refill each time to achieve optimal performance. g. Check water level in tank to make sure it is at the correct height listed inside the tank. Re-prime bowl by flushing 5 times in a row allowing the tank to refill each time to achieve optimal performance. h. Adjust settings according to adjustable screw setup in Step 17. i. Reseat tank by shutting off water supply, disconnect supply line, remove tank mounting nuts, inspect all gaskets and reassemble j. Adjust trip lever nut by loosening the nut a quarter turn at a time clockwise (reverse thread) k. Do not depress trip lever longer than 2 seconds for optimal performance. Depressing trip lever longer will negatively affect the toilet performance by causing a loss of prime. Re-prime bowl by flushing 5 times in a row allowing the tank to refill each time to achieve optimal performance.
Toilet leaks	a. Poor supply line connection. b. Poor bowl to tank/floor connection. c. Cracked Bowl d. Loose tank nuts e. Loose flush valve mounting nuts f. Tank to Bowl gaskets defective g. Black rim flapper leaking. Inlet valve will periodically run and you will see water coming from port in to the bowl h. Red jet flapper leaking. Inlet valve will periodically run	a. Review Step 15 of installation procedure. b. Review Step 1 through 6 of installation procedure. c. Send new bowl / return d. Tighten nuts, reinstall e. Tighten nuts, reinstall f. Replace gaskets g. Clean debris from seal surface. Replace flapper seal as needed and adjust settings according to adjustable screw setup in Step 17. h. Clean debris from seal surface. Replace flapper seal as needed and adjust settings according to adjustable screw setup in Step 17.
Toilet does not shut off	a. Flapper seal leaking or deformed. b. Sand or debris lodged in water control. c. Flush valve chain too tight, holding flapper open.	a. Clean debris from seal surface. Replace flapper seal as needed. See web for more info. b. Shut off water supply. Remove cap and clean as per Fluidmaster maintenance instructions at: <a href="http://www.americanstandard-us.com/enews/fluidmasterguide.pdf">www.americanstandard-us.com/enews/fluidmasterguide.pdf</a> c. Adjust settings according to adjustable screw setup in Step 17.
Toilet bowl rocks after installation	a. Wax ring not fully compressed. b. Floor not level.	a. Retighten bowl-to-floor knobs. b. Use toilet shims and /or place a bead of caulk around the base of the toilet.

## Care and Cleaning

When cleaning your toilet, wash it with mild, soapy water, rinse thoroughly with clear water and dry with a soft cloth.

**WARNING:** Do not use in-tank cleaners. These products can seriously corrode fittings in the tank. This damage can cause leakage and property damage. **American Standard shall not be responsible or liable for any damage caused by the use of in-tank cleaners.**

## Warranty

### TOILET LIMITED WORRY-FREE WARRANTY

**This toilet comes with a limited lifetime warranty on chinaware, a limited 10 year warranty on all mechanical parts of the toilet, and a limited 1 year warranty on the toilet seat if included with product.** If inspection of this AS America, Inc. ("American Standard") plumbing product, inclusive of the chinaware and all mechanical parts, confirms that it is defective in materials or workmanship, American Standard will repair or, at its option, exchange the product for the same or a similar model.

This limited warranty applies only to the original non-commercial purchaser and installation of the products. In the event of a limited warranty claim, proof of purchase will be required – save sales receipts.

For this warranty to become effective, the warranty registration process must be completed via the internet or telephone per the warranty registration instructions.

This limited warranty does not apply to commercial installations. The warranty for commercial installations is 10 years on chinaware and mechanical parts, and 1 year on the toilet seat if included with product.

This warranty **does not apply** to local building code compliance. Since local building codes vary considerably, the purchaser of the product should check with a local building or plumbing contractor to ensure local code compliance before installation.

This warranty **will be void** if the product has been moved from its initial place of installation; if it has been subjected to faulty maintenance, abuse, misuse, accident or other damage; if it was not installed in accordance with American Standard's instructions; or if it has been modified in a manner inconsistent with the product as shipped by American Standard.

**WARNING:** This warranty **DOES NOT COVER** any damages caused by the use of in-tank cleaners. These products can seriously corrode the fittings in the tank. This damage can cause leakage and property damage. **American Standard will not be responsible or liable for any damage caused by the use of in-tank cleaners.**

American Standard's option to repair or exchange the product under this warranty does not cover any labor or other costs of removal or installation including any costs of any surrounding material such as tile or marble. **American Standard is not responsible for any other incidental or consequential damages attributed to a product defect or to the repair or exchange of a defective product, all of which are expressly excluded from this warranty.** (Some states or provinces do not allow the exclusion or limitation of implied warranties, so this exclusion may not apply to you.)

This warranty gives you specific rights. You may have other statutory rights that may vary from state to state or province to province, in which case this warranty does not affect such statutory rights.

#### In the United States:

American Standard Brands  
1 Centennial Ave  
Piscataway, New Jersey 08854  
Attention: Director of Customer Care  
For residents of the United States, warranty information may also be obtained by calling the following toll free number: (800) 442-1902  
[www.americanstandard.com](http://www.americanstandard.com)

#### In Canada:

AS Canada, ULC  
5900 Avebury Rd.  
Mississauga, Ontario  
Canada L5R 3M3  
  
Toll Free: (800) 387-0369  
[www.americanstandard.ca](http://www.americanstandard.ca)

#### In Mexico:

American Standard B&K Mexico  
S. de R.L. de C.V.  
Via Morelos #330  
Col. Santa Clara  
Ecatepec 55540 Edo. Mexico  
  
Toll Free: 01-800-839-1200  
[www.americanstandard.com.mx](http://www.americanstandard.com.mx)

7301638-100 EN/SP Rev. B

### PLEASE COMPLETE AMERICAN STANDARD WARRANTY REGISTRATION PROCESS AND SAVE THIS WARRANTY INFORMATION

**IMPORTANT:** Registration of the toilet must be completed for this warranty to become effective. Your registration will make it easier to contact you in the event of a product recall.\*

**INSTRUCTIONS:** Register your toilet at [www.americanstandard.com](http://www.americanstandard.com). Please save your proof of purchase (sale receipt).

If you need assistance or do not have access to our website, please contact American Standard Customer Care at: (800) 442-1902. An American Standard representative will assist in completing the warranty registration.

\* In California, your warranty rights remain intact even if you do not complete the registration process.

**THIS WARRANTY IS NOT TRANSFERABLE FROM ORIGINAL CONSUMER PURCHASER.**

**Notes:**